

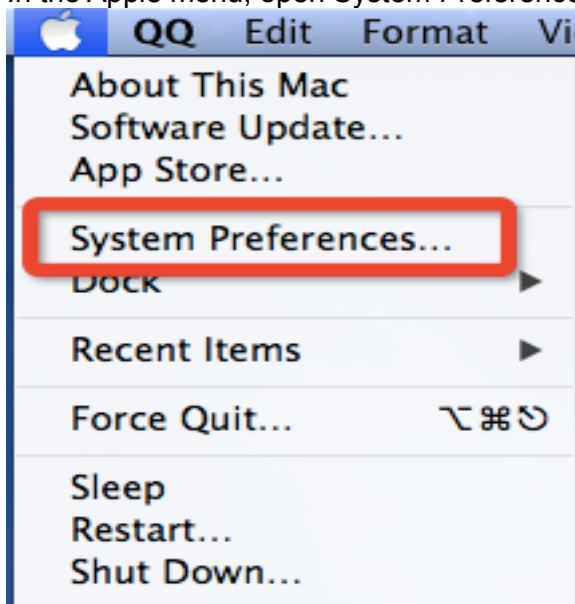
# **SNOWBALL USB MICROPHONE USER GUIDE**

## **Setting up the microphone**

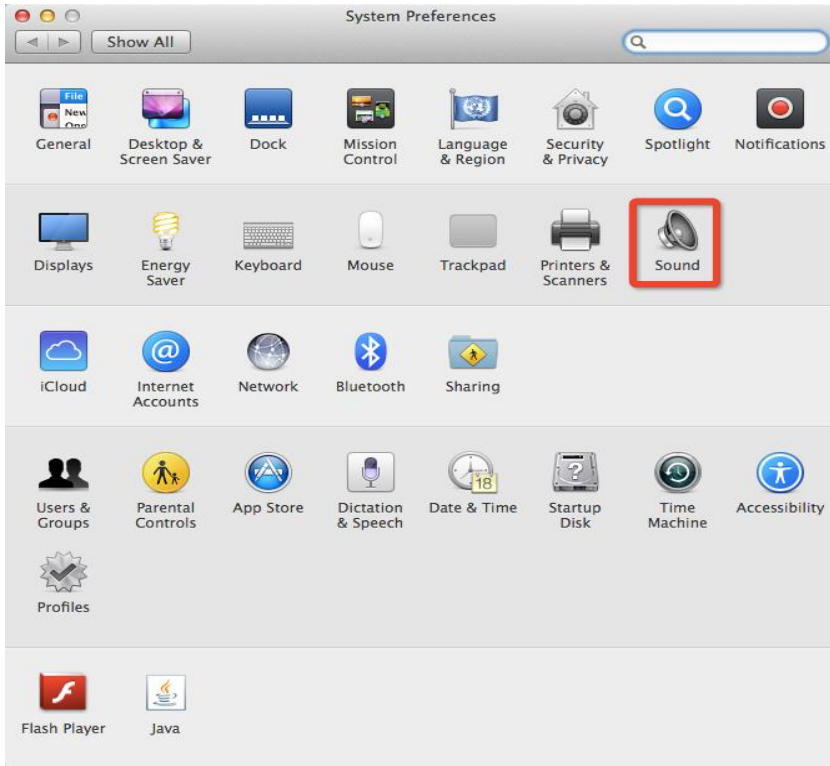
1. Mount the mic on the Blue Snowball desktop tripod.
2. Be sure to position the Snowball over the center leg of the tripod to prevent tipping.
3. Once safely mounted, connect the Snowball to the USB port on your Mac or Windows computer.
4. Make sure that the side with the BLUE logo is facing the source of the audio.
5. When connected, the LED just above the Blue logo will glow red.

## **Macintosh Setup Procedure**

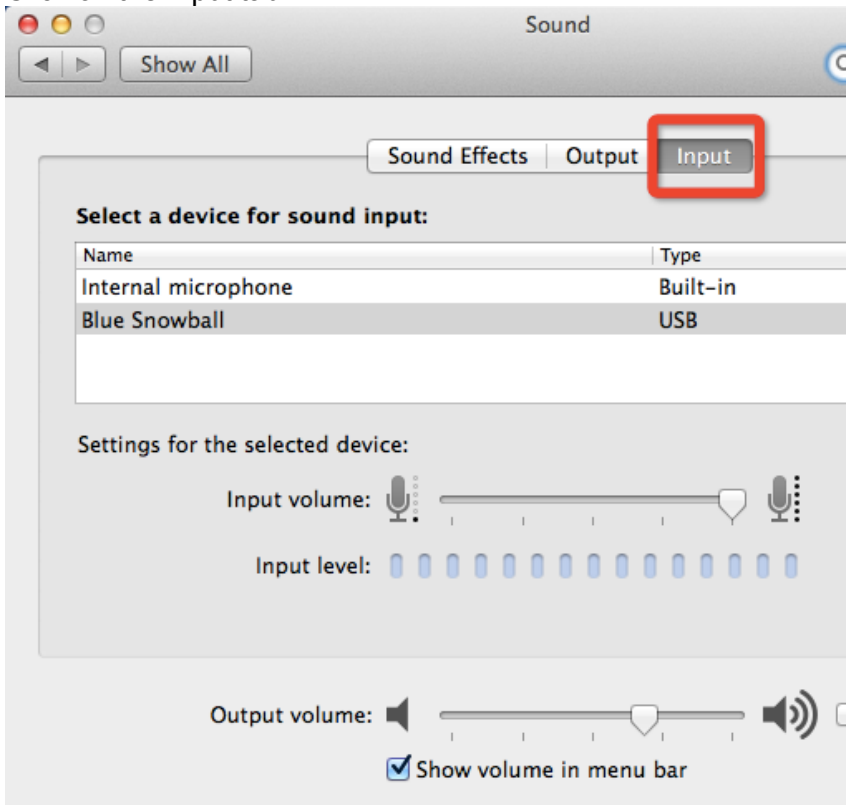
1. In the Apple menu, open System Preferences.



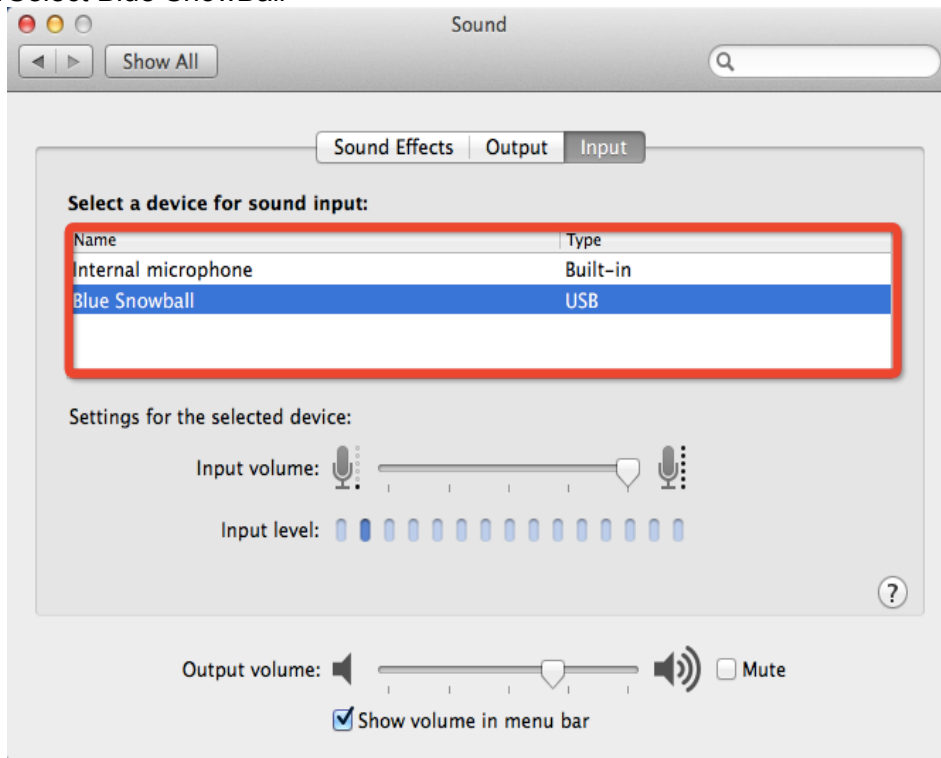
2. Click the Sound.



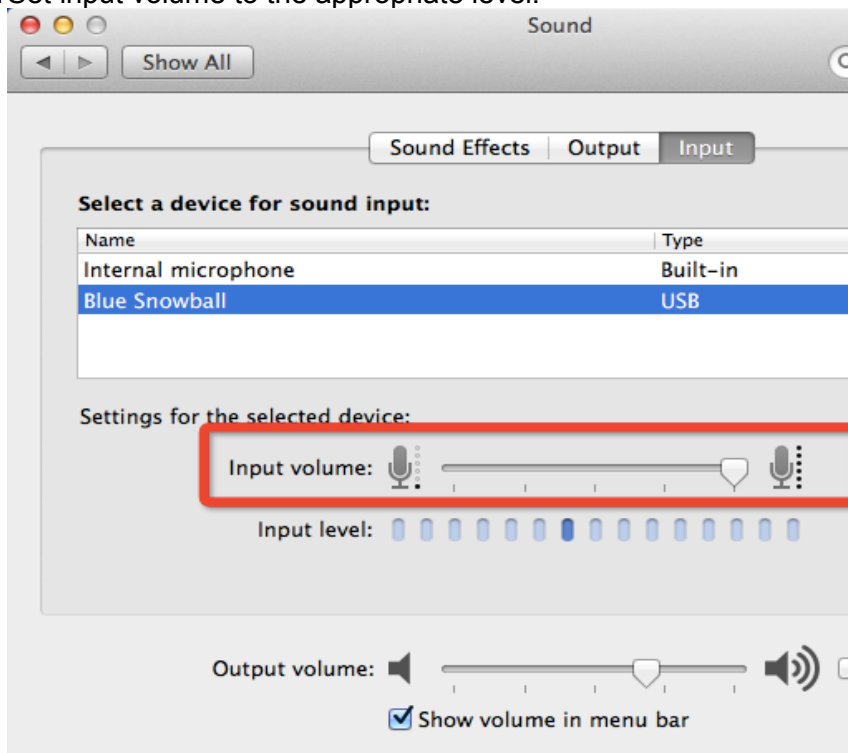
3. Click on the Input tab.



#### 4. Select Blue SnowBall



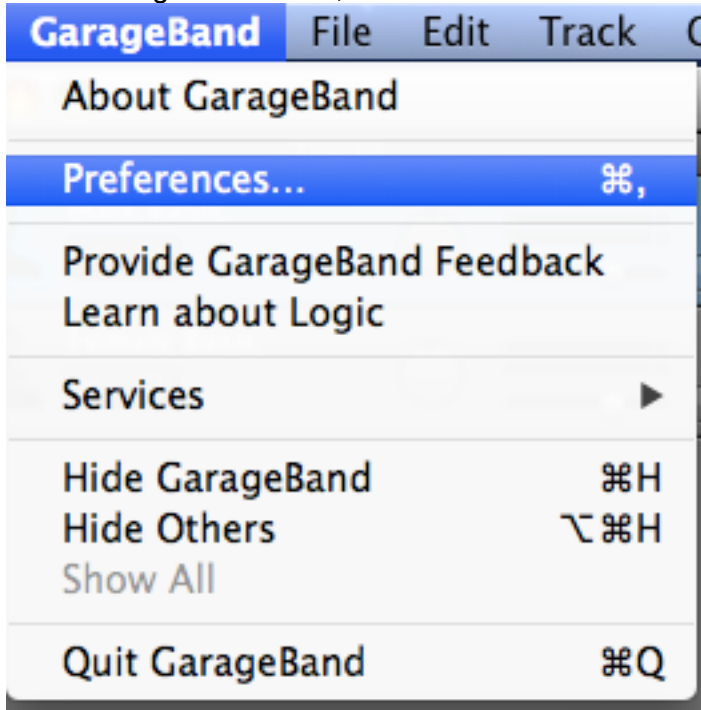
#### 5. Set input volume to the appropriate level.



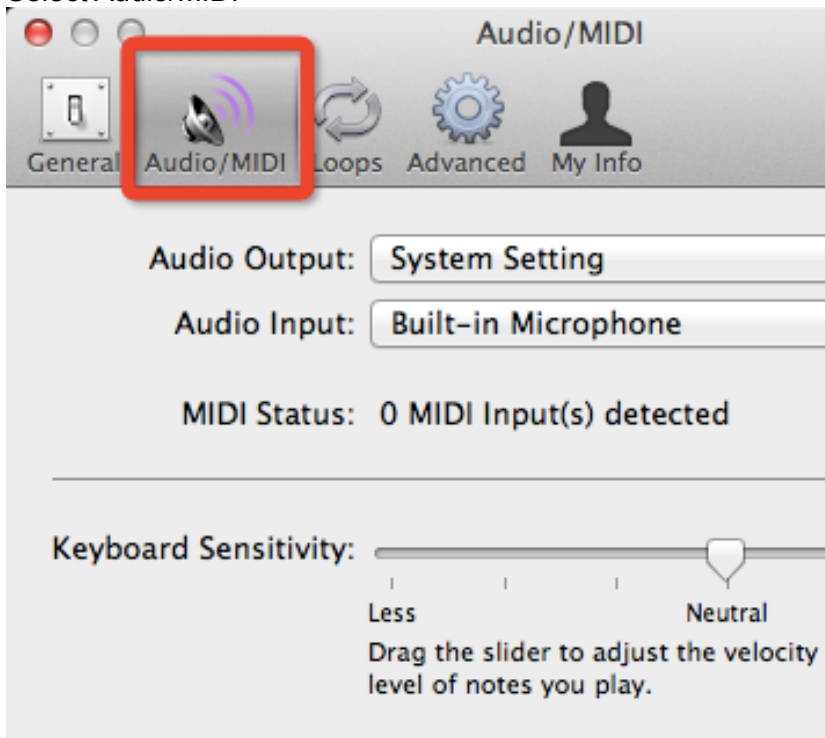
#### 6. Exit System Preferences.

## Garage Band Setup Procedure

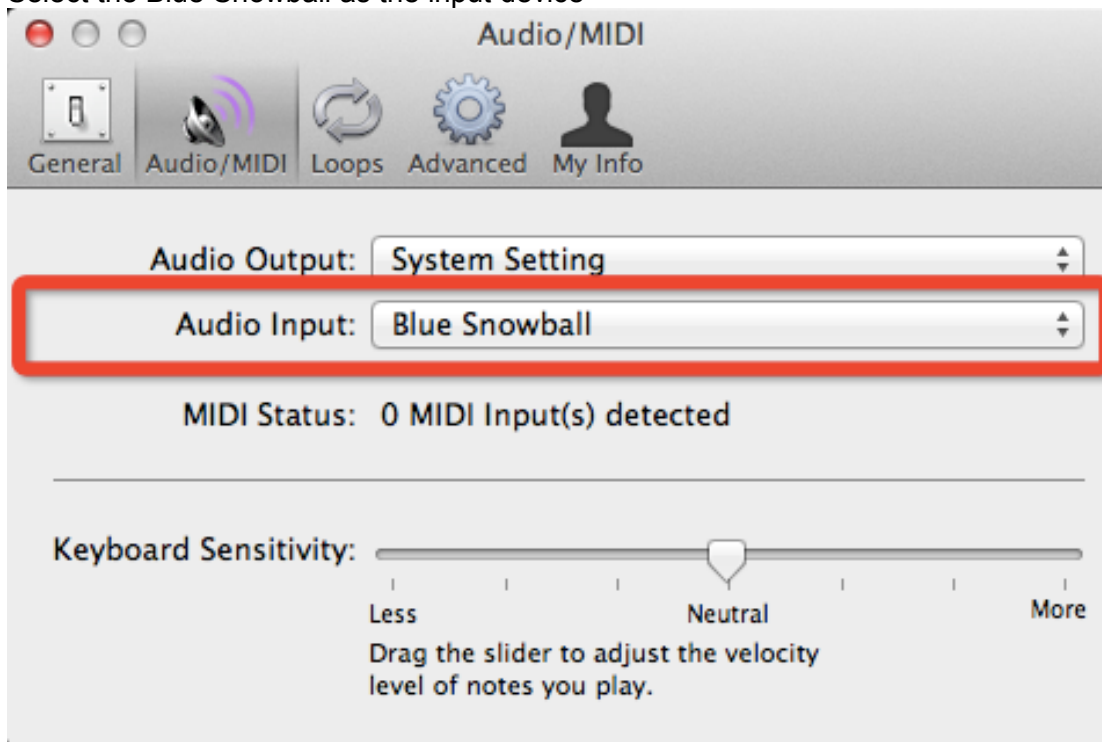
1. In the GarageBand menu, select Preferences



2. Select Audio/MIDI

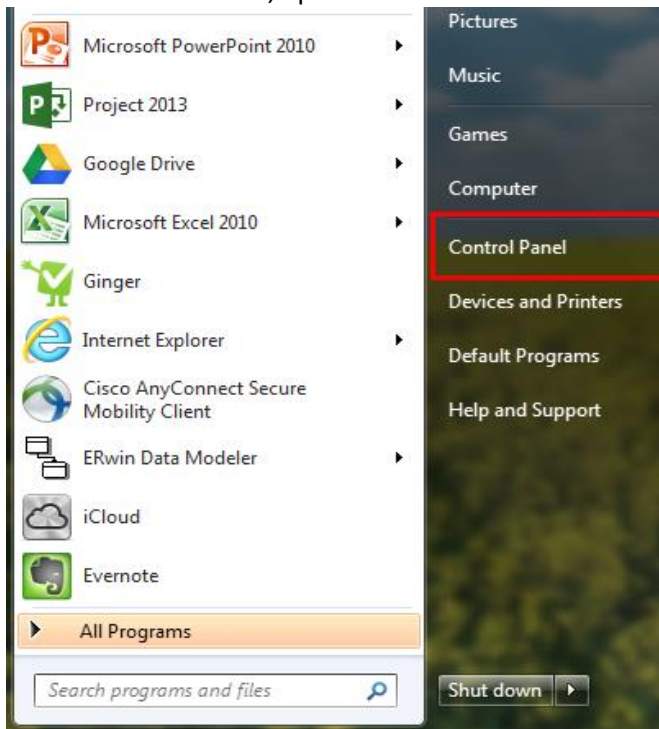


3. Select the Blue Snowball as the input device



# Windows Setup Procedure

1. Under the Start Menu, open Control Panel

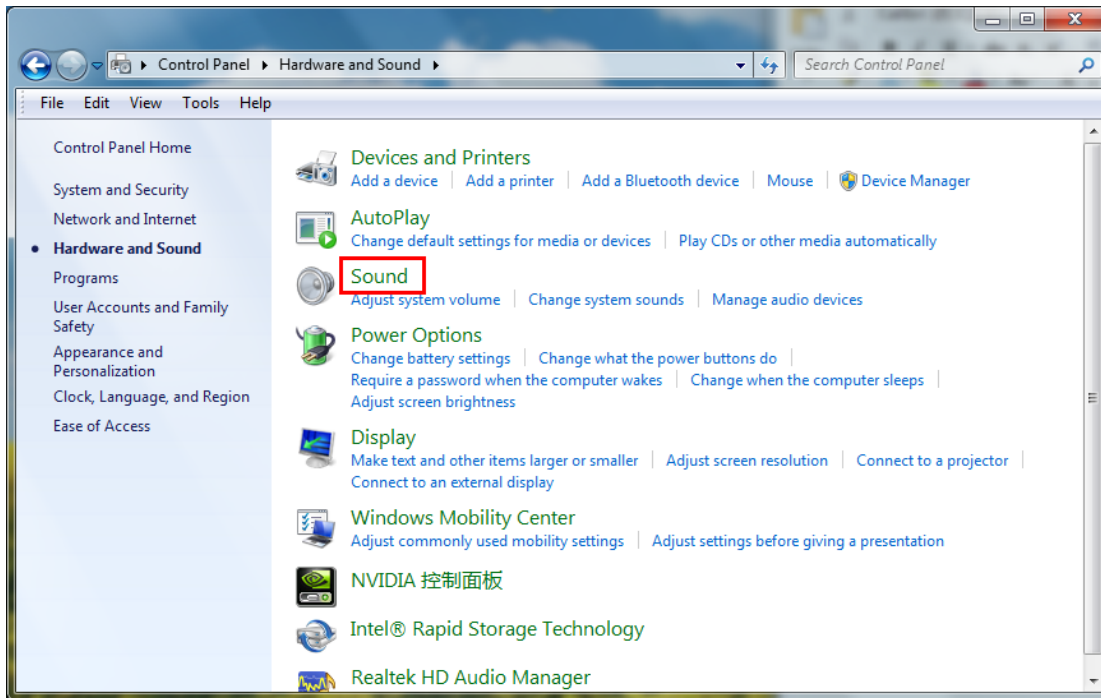


2. Select Hardware and Sound

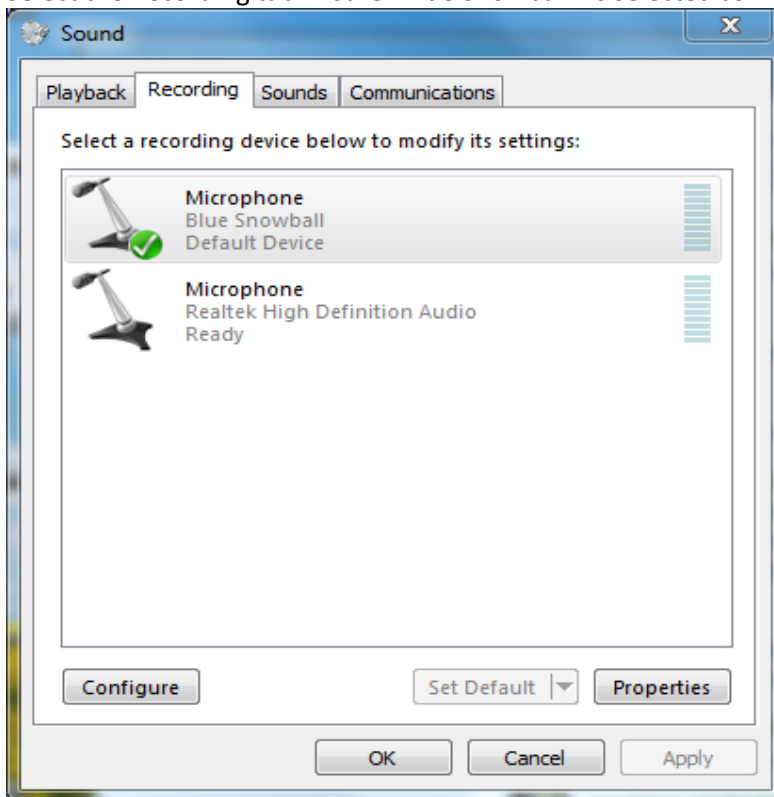




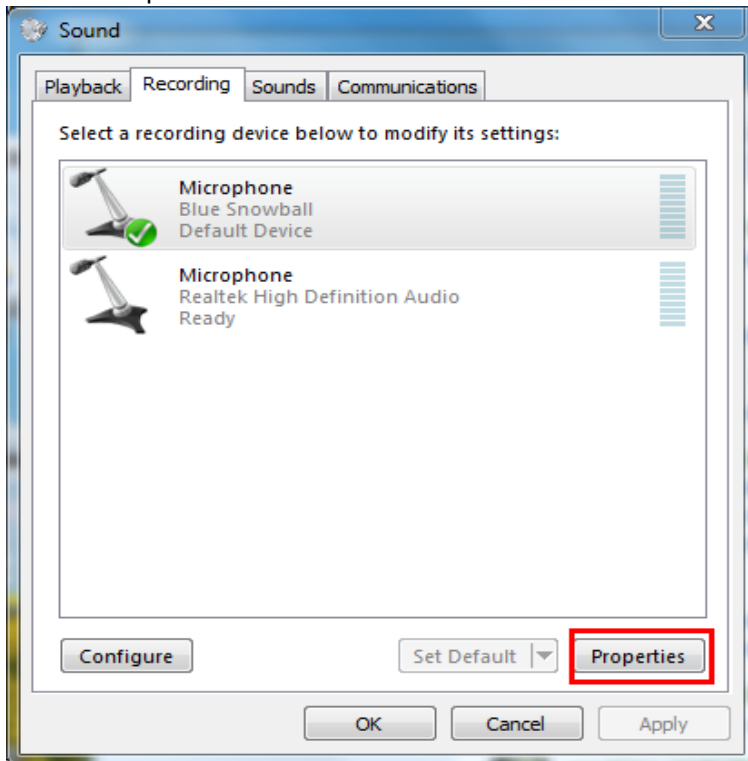
### 3. Select Sound



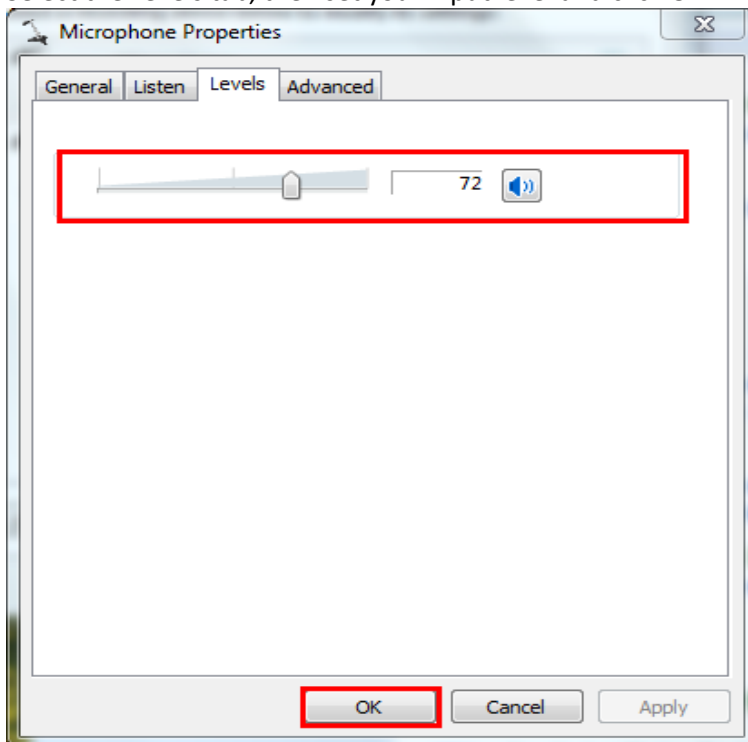
### 4. Select the Recording tab. Insure “Blue Snowball” is selected as Default device



5. Click on Properties



6. Select the Levels tab, then set your input level and click OK.



7. Exit control panel.